



## Slough

These smart decorative footpaths are made using an alternative to resin bound surfacing.

# Project Details

**Client:** Slough

**Location:** 53.011337,-2.2228218

**Sector:** Regeneration

**Date:** 2017

**Sector:** Regeneration

**Use:** Decorative Footpaths

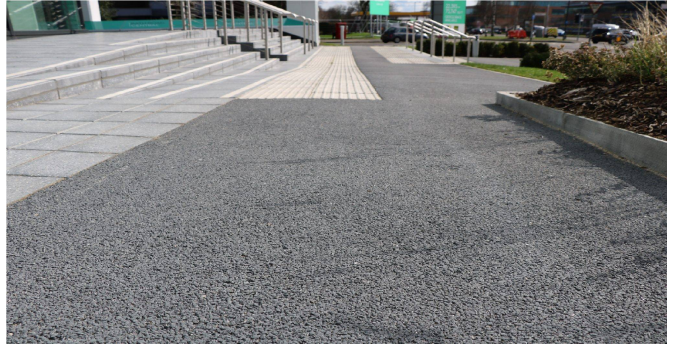
**Product:** 6mm Natratex Colour Grey Porous

**Quantity:** 500 sqm

A partnership between MeiLoc and NatraTex brought about this beautiful regeneration in the heart of slough. Using our patented NatraTex Colour surface, we were able to create beautiful coloured hard landscaping and decorative paving that totally regenerated the space.

# Project Gallery





## Feedback From Our Client

### What our clients say

MeiLoc are very pleased with the NatraTex surfacing – a great appearance and finish. NatraTex really sets off the new timber school building and the warm tones create a welcoming setting for play. I would thoroughly recommend this product and look forward to working with BituChem again soon.

**MeiLoc - Landscape Architects**

### Need a Similar Project?